



**PHIL JONES BASS**

**TONE TO GO™**



[www.PJBworld.com](http://www.PJBworld.com)

855.227.7510



**PHIL JONES BASS**

Our mission is to bring musicians around the world revolutionary products that deliver performance, reliability, and portability – all in the most condensed package physically possible. We are here to set trends, not to follow them.

The staff at PJB shares my passion to build only the best. That does not mean the most expensive.

We are dedicated to giving our utmost in quality, value, and service to the discriminating musician.

*Phil Jones*

**NEW**

### **PJB PE-5 Pedal**

**5 Band EQ Pre-Amp, Direct Box, & Signal Booster**

The PE-5 is a pedal designed for bass guitar and upright bass which incorporates a sophisticated 5 band EQ and also offers superior function as a Pre-Amp, Direct Box, and signal booster.



### **NANO BASS X4**

35 Watts  
3 Band EQ  
5.3 lbs



### **BASS CUB PRO**

120 Watts  
5 Band EQ  
16.7 lbs



### **BP-200**

200 Watts  
3 Band EQ  
2.5 lbs

PHIL JONES BASS PHIL JON  
PHIL JONES BASS PHIL JON



**PHIL JONES BASS**

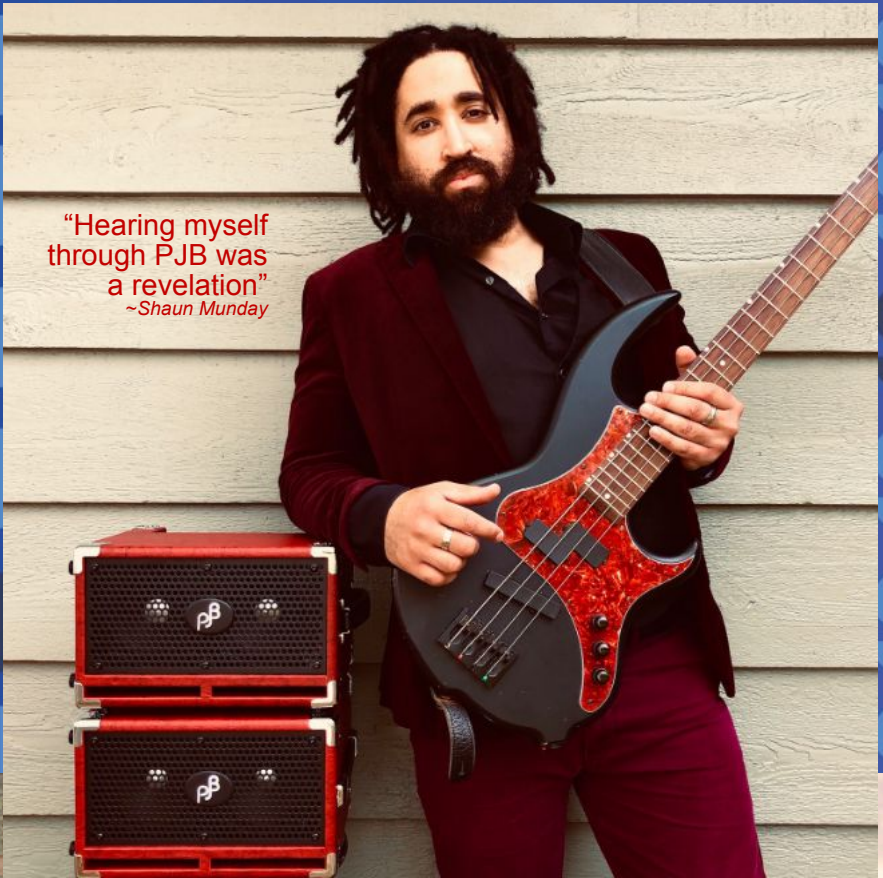
“Phil Jones Bass. It is unbelievable, very clean ,and very clear and direct on stage... and that’s my sound!”

**BAKITHI KUMALO**  
(Paul Simon Band)

Photo taken at Carnegie Hall

PHIL JONES BASS PHIL JON  
PHIL JONES BASS PHIL JON  
PHIL JONES BASS PHIL JON  
PHIL JONES BASS PHIL JON  
PHIL JONES BASS PHIL JON

PHIL JONES BASS PHIL JONES  
PHIL JONES BASS PHIL JONES  
PHIL JONES BASS PHIL JONES  
PHIL JONES BASS PHIL JONES  
PHIL JONES BASS PHIL JONES  
PHIL JONES BASS PHIL JONES  
PHIL JONES BASS PHIL JONES  
PHIL JONES BASS PHIL JONES  
PHIL JONES BASS PHIL JONES



“Hearing myself through PJB was a revelation”  
~Shaun Munday



“PJB gear allows my own individual sound to be heard. The clarity is something I’ve never experienced with any other brands before.”

~Kirby Barber

# BASS AMP HEADS



Chris Donohue  
Emmylou Harris Band

**music**  
**EDITORS**  
**CHOICE**  
Summer NAMM  
2018



*The BP-800 is awesome... a really great price for a really powerful amp!*

**BASSMUSICIAN**  
THE FACE OF BASS

## BP-800

Small and lightweight just got more powerful with the BP-800 bass amplifier. The BP-800 is a high power, high performance no compromise compact amplifier for all playing situations. It delivers the most bass for the buck and weighs only 5.7 lbs and is 7.5" wide

Power: 800 Watts, Controls: 5 Band EQ, Input: 1 x Input, 1 x mini Sw(Mute/Low/High) Output: Speaker-Out, DI-Out, Line-Out, Headphone-Out, Dimensions: 7.5 x 12.5 x 2.5 inch (WxDxH) Weight: 5.7 lbs

**NEW**



## **BP -200**

### ***Ultimate Affordable Bass Head***

The BP-200 bass amplifier from Phil Jones Bass redefines tone to go in a no compromise, high performance 200 Watt design that can fit into a backpack for the gigging, studio, and practicing bassist on the go. The BP-200 is packed with the features and inspirational PJB tone that musicians have come to expect while its size (6.9" W x 2.1" H x 6.7"D) and weight (2.5 Lbs) and street price of \$375 make it the ultimate in affordable portable bass amps.

The BP-200 is a D-Class power amplifier and a pure class A single channel pre-amplifier housed in a machined aluminum/steel enclosure. D-Class amplifiers are highly efficient and therefore produce far less heat than the conventional class AB amplifiers. Other features include a switchable input for active and passive basses, mute switch, 3 Band EQ, headphone out jack, variable input sensitivity control to match instrument output with amplifier, sub sonic filter to reduce excessive loudspeaker cone motion, balanced line out with pre/post EQ and ground lift switches, pre amp output, line out jack with Neutrik high-current socket which can accommodate ¼ jack or a Speakon plug, 200 Watts RMS at 4 Ohms and 120 Watts RMS at 8 Ohms.

The BP-200 will work on any AC voltage from 100- 240 volts AC enabling it to conveniently travel worldwide without having to switch to local AC supply voltages.

**“Vincent Van Gogh once said ‘Great things are done by a series of small things brought together.’ This setup provides a wonderful example of the truth of that statement, and I encourage you to give it a try to see for yourself. “**

**~ Rod Taylor in Bass Player Magazine describing the BP-800 with PJB Cabinets**

**Juna Serita**



## BASS COMBO AMPS

**Micro 7 (M-7)** Tone-to-go is more portable and affordable with the Phil Jones Bass MICRO 7 combo. The MICRO 7 is a single channel 50 Watt bass combo with a 7" driver and 3" tweeter. It measures less than a foot on all sides and weighs only 15 lbs. It is the most affordable and compact combo from PJB yet.

Power: 50W (RMS) Speaker: 1x7-inch speaker and a 3" high frequency transducer Controls: Input volume, Master, 3-Band EQ (Treble, Mid, Bass)

Dimensions (WxDxH): 12 x 9.7 x 9.8 (inches) Weight: 15.5 lbs



*The PJB Micro 7 is a well-crafted practice amp with impressive tone and clarity*

**PREMIER**Guitar™



### **Session 77 (S-77)**

The Session 77 is the result of our efforts to build a budget conscious amp without giving up our quest for quality. Focusing on the most basic needs of most bass players, we achieved the goal of having the best sounding, most reliable amp at an unbeatable price.

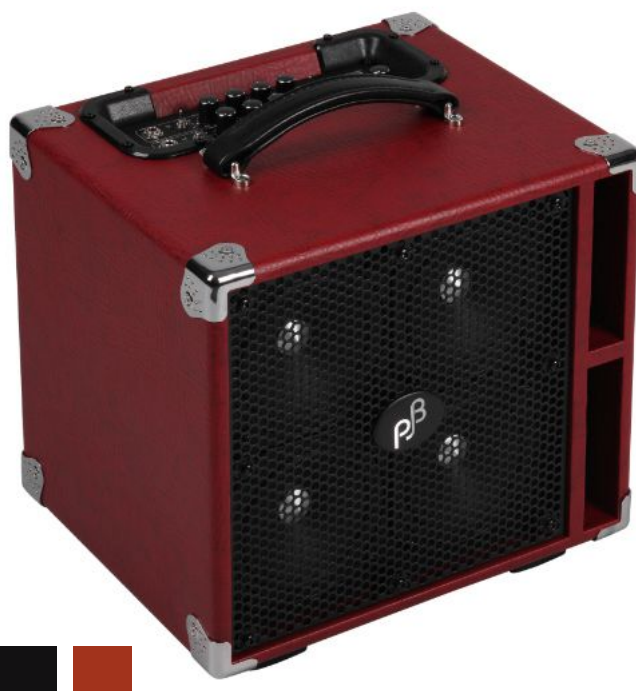
Power: 100W (RMS) Speaker: 2 x 7" Proprietary PJB woofers + 3" tweeter Controls: Input volume, Master, 3-Band EQ (Treble, Mid, Bass) Jacks: Input, Aux Input, Preamp out, Headphone, DC Input Dimensions (WxDxH): 17 x 8.5 x 12.5 (inches) Weight: 28 lbs

### **Suitcase Compact (BG-400)**

While being a generous 300 watts by itself, when paired with the C4 extension cab it produces a Massive 500 watts, allowing this compact power to serve all performance needs.

Power: 300W (RMS) Speaker: 4 x 5" PJB PiranhaType-B Controls: 2 x [Level Selector, 3 band EQ], Limiter w/on-off Switch, Master Volume Jacks: 2 Inputs, Tuner out, Preamp out, Headphone, D.I. Out, FX Send/Return, Ext. Speaker Out, AC-Input

Dimensions (WxDxH): 14.2 x 12.4 x 13.4 (inches) Weight: 40 lbs





**NEW**

## PJB NANOBASS X4 COMBO AMPLIFIER

Lightest Portable Tone-To-Go, A Mini Marvel

Nanotechnology breaks the sound barrier with the X4 Nanobass, which is the most compact and portable combo amplifier ever designed by Phil Jones Bass for desktop and practice applications. It is a highly efficient mini engineering marvel that redefines transportability and "Tone To Go". It is a 35 Watt amplifier with a 4" speaker and 3 Band EQ that not only rocks with bass; it will also provide dazzling tone for other instruments including guitar, ukulele, violin, and electronic drums.

The practical and versatile design includes an auxiliary input compatible with iPads, iPods and drum machines, and is Bluetooth equipped for music listening enjoyment and other applications. PJB's proprietary NeoPower 4-inch speaker delivers full frequency range that achieves ultimate tonal clarity and transparency for instruments as well as high-fidelity sound to any source fed into the auxiliary and Bluetooth inputs.

The X4 weighs just over 5 lbs and is small enough to fit in a backpack. It is available in Black, Red, and White colors. As with all products in the PJB family it is constructed from the highest quality materials and built to provide years of enjoyment and "Tone To Go" anywhere in the world with its built in worldwide AC voltage input.



**NEW**



## **PJB Bass Cub Pro**

The PJB Bass Cub Pro (Model BG-120) is the ultimate in the evolution of the popular Bass Cub ultra-compact bass amplification series from Phil Jones Bass.

The power amplifier section has been completely redesigned and has been fortified to deliver as much as 200 watts RMS of pure tone to go.

Together with PJB's Chrome-Dome speaker technology it provides far greater transient attack from improved loudspeaker cone acceleration, greater dynamic range, and lower harmonic distortion. It will provide increased headroom and speed to capture every nuance of bass playing, from gentle fingerstyle to hardcore slapping.



Dan Raiani



### Double Four (BG-75)

The Double Four is at the pinnacle of micro bass combos. With the latest in driver design and digital amplifier technology this tiny bass combo continues to amaze with its great PJB bass tone.

Power: 70W (RMS) Speaker: 2 x 4" PJB  
Custom Controls: Level Selector, Volume, 3  
band EQ, Aux-level Jacks: Input, Aux In,  
Headphone Out, Line Out Dimensions  
(WxDxH): 11 x 8 x 6.8 (inches) Weight: 8.8 lbs

   \* AVAILABLE COLORS



## Bass Cub II (BG-110)

The Bass Cub II is the latest version of the popular PJB Bass Cub model. A dual channel preamp makes the Bass Cub II the perfect combo for players to switch effortlessly from Electric to Upright Bass and can be lifted with one finger. With 110 watts of pure bass tone the Bass Cub 2 has far greater transient attack from improved loudspeaker cone acceleration, greater dynamic range, and lower harmonic distortion using our unique “Chrome-Dome” technology. The improved amplifier design also has an upgraded power supply able to provide a rock-solid stable voltage and current to feed the amplifier.

Power: 110W (RMS) Speaker: 2 x 5” Neo-Power Type-A  
Controls: 2 x [Level Selector, 3 band EQ], Aux-level, Master Volume  
Jacks: 2 Inputs, Aux In, Tuner out, Headphone  
Dimensions (WxDxH): 12 x 11 x 7.8 (inches)  
Weight: 15.5 lbs

## Roadcase (BG-800)

The Roadcase has the convenience of a combo but with output power you get from separate components. It has two channels allowing for the ultimate in versatility when using more than one instrument or when two different EQ settings are desired.

Power: 750W (RMS) Speaker: 12 x 5” Neo Power  
Controls: 2 x [Level Selector (Mute-Hi-Low), Volume, 6-Band EQ], Limiter w/on-off Switch, Master Volume  
Jacks: 2ch Input with Phantom Power, AUX In (Level), Headphone Out, Tuner Out, Line Out, XLR Balanced Out with Ground / Lift, Effect Send /Return, Compressor & Limiter On/ Off  
Dimensions (WxDxH): 15 x 18.9 x 36.2 (inches) Weight: 84 lbs



## SPEAKER CABINETS

**PJB's huge emphasis on research and development of transducer technology ensure that no other cabinets sound like a PJB cabinet.**

Phil Jones Bass cabinets are precisely tuned using multiple loudspeaker analysis programs to reduce cone movement at the lowest frequencies, and to increase low frequency output.

PJB employs a full size anechoic chamber for acoustic measurements and a laser scanning Doppler interferometer to analyze cone movement in 3D across the whole audio spectrum.



### CAB 27

2x7" PJB woofers  
3" PJB Tweeter  
8 ohms  
35Hz-15KHz  
200w  
13x16x13 (inches)  
29 lbs



### CAB 67

6x7" PJB woofers  
3" PJB Tweeter  
8 ohms  
30Hz-25KHz  
500w  
16.4x12.6x27.2(inches)  
54 lbs





### COMPACT 2

2x5" speakers  
8 ohms  
40Hz-15KHz  
200 Watts  
12.5x8x11  
16 lbs



### COMPACT 4

4x5" speakers  
8 ohms  
30Hz-15KHz  
400 Watts  
14x12x13  
29 lbs



### COMPACT 9

9x5" PJB woofers  
8 ohms  
23Hz-15KHz  
900w  
21x19x22 (inches)  
74 lbs



### COMPACT 8

8x5" speakers  
8 ohms  
25Hz-15KHz  
800 Watts  
14x12x24  
57 lbs



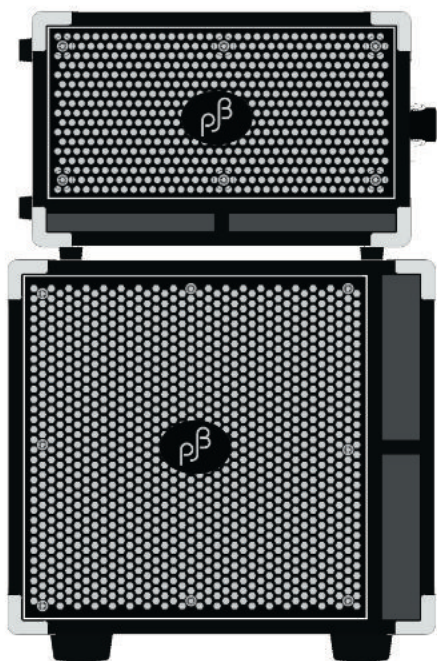
## SUGGESTED AMP/ CABINET PAIRINGS

SHOWN: BP-800 with 2  
Compact 4 or 2 Compact 8  
cabinets

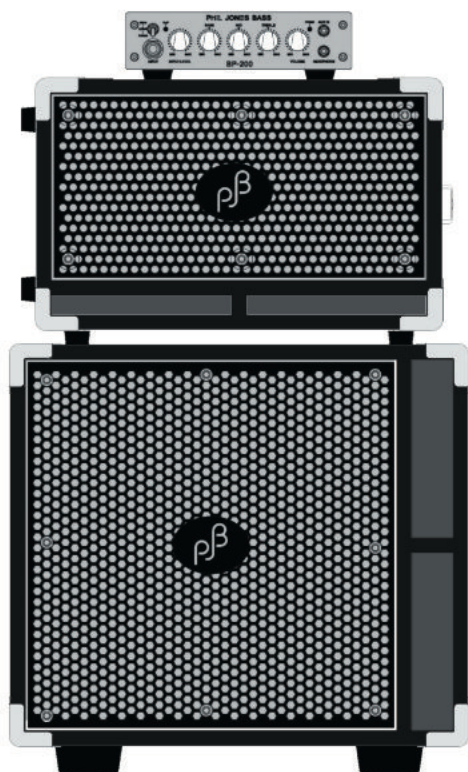
OTHER GREAT OPTIONS:  
BP-800 with C-67, C-47  
and/or C-27 cabinets



## SMALLER SUGGESTED AMP/CABINET PAIRINGS



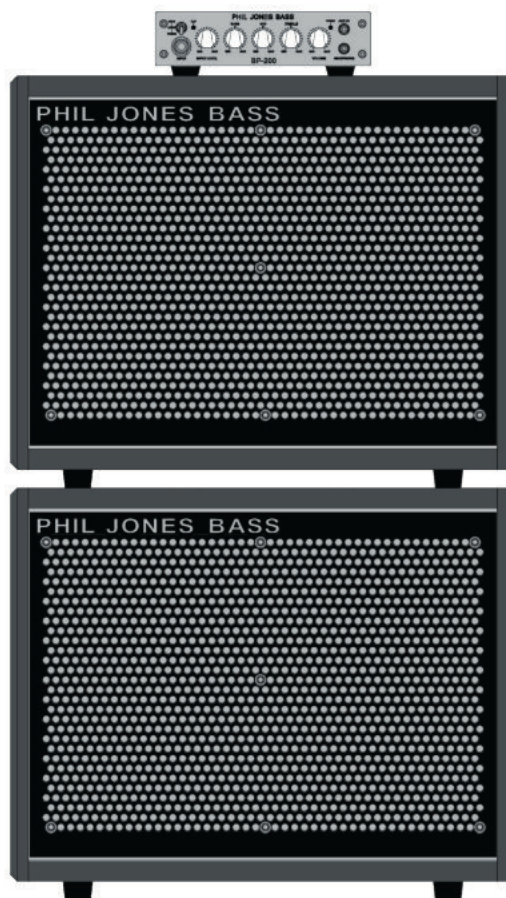
BG120 with a C4



BP200 with C2 and C4



BG120 with C2 and the Ear Box



BP200 with (2) Cab 27s



# HEADPHONES, MONITORS, & ACCESSORIES

## Bighead Pro (HA-2)

**Mobile High Performance Multi-Function**  
Headphone Amplifier/Digital Audio  
Interface

The HA-2 is the second model in the Bighead series and is a step up model of the popular HA-1 Bighead with added technology and features.



## PJB Headphones (H-850)

World's First Pair of Headphones Dedicated to Bass Players. Not all headphones are suitable for bass instruments. Many may sound good for casual listening, but plug them into the headphone jack of a bass amp and you will soon find their limitations.

PJB H-850 headphones are the first pair designed specifically to bridge the gap between high-quality music and deep and clear bass.



## Ear Box (EB-001)

Near field bass monitor. Get your sound dialed in at every venue. The EAR-Box produces a near field sound that, when positioned close to you, will give you far greater clarity because it greatly increases the ratio of direct sound to the undesirable acoustics of the venue.



## Carry Bag

Keep your PJB gear in great condition with this durable gig bag. Designed for the storage and transport of BG-75, BG-110.



## **PJB PE-5 Pedal**

### ***5 Band EQ Pre-Amp, Direct Box, & Signal Booster***

The PE-5 is a pedal designed for bass guitar and upright bass which incorporates a sophisticated 5 band EQ and also offers superior function as a Pre-Amp, Direct Box, and signal booster.

The PE-5 is engineered with a unique switchable input impedance which allows the pedal to match exactly to either a magnetic or piezo pickup. It achieves the full band spectrum for either pickup source. In addition it is a signal booster which compensates for low output pickups and will also provide ample drive for any amplifier. The input level and gain controls are designed to precisely match the pickup output to an amplifier. The line output is strong enough to use directly into a power amplifier or a powered speaker.

The 5-band EQ is a high precision equalizer which means that each boost or cut level is identical to each adjacent band. Plus the Q factor of each band is identical. This makes it far easier for the player to accomplish the tone that they are pursuing. These frequency bands were carefully chosen for the voice of a bass so that the user will be able to adjust the EQ rapidly to get the desired sound.

The DI output is of the highest audio quality obtainable providing a match to even the finest recording studio mixing consoles and live sound systems. It has extremely high signal to noise ratio and features a ground lift switch to eliminate the possibility of "Mains Hum".

The PE5 can be powered by a standard 9-volt DC pedal adaptor or run on its own internal lithium-ion battery that is charged with a standard cell phone charger via its USB socket. The two foot switches provide a mute function and a true bypass. The rugged housing is constructed of die cast aluminum alloy made to deliver years of service.

Some of the most influential musicians in the world are using PJB products in the studio and on the road. Check out more artists at [www.PJBworld.com](http://www.PJBworld.com)

OSCAR CARTAYA



BOB GLAUB



PINO PALLADINO



NATHAN EAST



BEN KENNY



## PHIL JONES BASS

8509 Mid County Industrial Dr.

St. Louis, MO 63114

855.BASS510 (277.7510)



[www.PJBworld.com](http://www.PJBworld.com)